



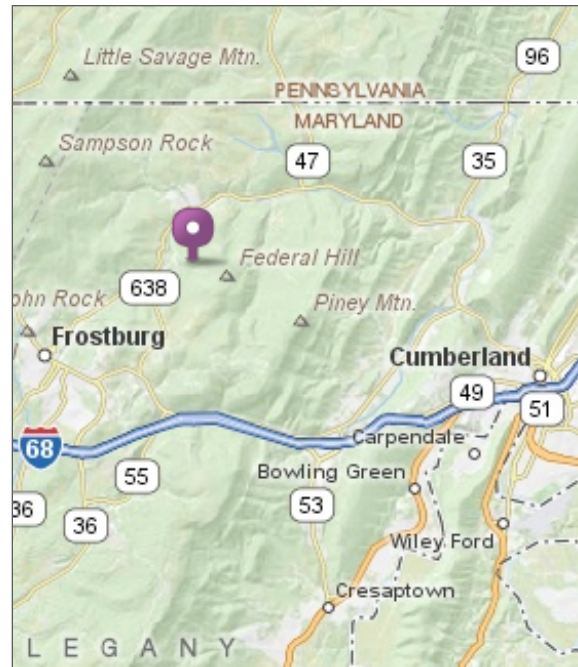
HOW TO REGISTER

Please register by sending the following information to janicekeene@evergreenheritagecenter.org

- Name,
- Address,
- Email address,
- Contact phone number,
- Workshop(s) you are interested in attending,
- Approximate acreage of your forest land.

If you do not use email, you may phone the Evergreen Heritage Center at 301-687-0664.

Our website includes a copy of the schedule and this brochure, and will be updated to show if any workshops are filled. We can accommodate 40 people per session.



LOCATION OF THE EVERGREEN HERITAGE CENTER

The Evergreen Heritage Center is located about 10 minutes from Frostburg and Cumberland, and about 2.5 hours from Baltimore, Washington DC and Pittsburgh.

Please check our website for directions or use the address below in your GPS.

EVERGREEN HERITAGE CENTER
 15603 TRIMBLE RD NW
 MOUNT SAVAGE, MD 21545

www.evergreenheritagecenter.org
 301/687-0664

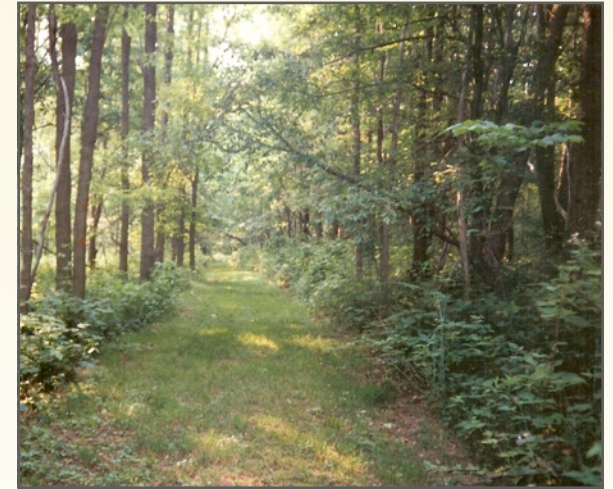
FOR MORE INFORMATION ABOUT THE AMERICAN TREE FARM SYSTEM, CHECK THEIR WEBSITE:

www.treefarmssystem.org

MARYLAND

STEWARDSHIP PROJECT

WOODLAND WORKSHOPS



OVERVIEW

The goal of the Maryland Stewardship Project is to educate landowners and their families on the benefits of sustainable forestry and environmental stewardship. This collaborative project includes six landowner workshops at the Evergreen Heritage Center in Mount Savage, MD.

This project is funded by the American Tree Farm System with support from over a dozen environmental agencies and organizations (listed inside this brochure).



SPONSORS



American Tree
Farm System
www.treefarmssystem.org



www.dnr.state.md.us



Maryland Forests
Association
www.mdforests.com



Allegany County
Forestry Board
www.bigtrees.allconet.org



www.nature.org

Guest speakers will include environmental experts from MD Department of Natural Resources, MD Department of Agriculture, University of Maryland, Frostburg State University, Allegany College of Maryland, and organizations such as the American Tree Farm System, Chesapeake Bay Foundation, Maryland Forests Association, Allegany County Forestry Board, and The Nature Conservancy.

Schedule of Workshops

WOODLAND STEWARDSHIP

APRIL 14, 2012

REGISTER BY: APRIL 1

What does it mean to be a woodland steward? This workshop will explore the purpose and benefits of Forest Stewardship and Tree Farm Forest Certification for landowners and their descendants and will discuss sustainable forestry at the Evergreen Heritage Center (EHC).

WOODLAND INCOME*

MAY 12, 2012

REGISTER BY: MAY 1

Can your forest yield more than timber? Attendees of this workshop will discover a variety of wood products, wood art, and alternative forest products (maple syrup, herbs, etc) that can generate forest income and will see products and art in use or on display at the Evergreen Heritage Center. The benefits of ATFS Certification to family forest owners will also be covered.

WOODLAND WATER QUALITY

JUNE 9, 2012

REGISTER BY: MAY 25

How do trees and forests impact our water? This workshop will explore the Chesapeake Bay watershed, the impact of forests on water quality and fish populations, how to test for basic water quality parameters, how Stewardship and Tree Farm standards benefit water quality, and water conservation best practices.

WILDLIFE MANAGEMENT

JULY 14, 2012

REGISTER BY: JULY 1

Many people manage their forestland due to a love of wildlife. In this workshop, participants will learn about the aspects and benefits of Wildlife Management as part of Stewardship and the Tree Farm system, using the new Evergreen Heritage Center (EHC) Wildlife Management Plan as one example, as well as touring the EHC property to view wildlife habitat. Resources to learn more about local wildlife will also be available.

WOODLAND RECREATION

AUGUST 11, 2012

REGISTER BY: AUGUST 1

Your forest can provide a recreation retreat for visitors while also showcasing good stewardship. This workshop will explore how landowners may provide diverse opportunities for woodland recreation under Stewardship and Tree Farm status. A tour of the Evergreen Trail and recreation plans for the future will be shared with attendees. In addition, insurance responsibilities and options will be discussed.

FOREST ECOSYSTEMS

SEPTEMBER 8, 2012

REGISTER BY: AUGUST 25

What is an ecosystem and how do we know if it is healthy? This workshop will help landowners understand how a forest ecosystem functions and changes. We will examine the interrelationships of the EHC Stewardship, Tree Farm, Soil and Water, and Wildlife Management Plans; and the benefits of using these plans for the environment and the landowner. Large-scale forest ecosystems and carbon footprints will be discussed.

***PLUS: LOGGING DEMONSTRATION ON MAY 12TH FROM 10 AM TO NOON**
prior to the Woodland Income workshop.